



 **Istanbul Africa
Trade Company**



Product Catalogue

Machinery

2020



About Istanbul Africa Trade Company

Istanbul Africa Trade Company improves economic and commercial relations between Turkey and African countries, through professional and effective trade services.

We offer trade consulting for businesses which are interested in importing Turkish and European products.

Moreover, our professional team works with companies in order to increase their presence in the African markets.



Headquartered in **Istanbul, Turkey.**



Regional company partners in **Ghana** and **Zimbabwe.**



Distribution agreement with **15+ Turkish Corporations.**



Partner companies have more than **150,000 square-meters manufacturing area** and **1,500+ employees combined.**



info@istanbulafrica.com



+90 539 415 3139

General Sales Director



burak.unal@istanbulafrica.com



+44 78 4012 7219

Burak Unal, Director of African Markets

Burak Unal is the Director of African Markets and Relations of Istanbul Africa Trade Company. In this role, he is responsible for leading the company's global trade initiatives and client relations. Burak is responsible for managing relations with national business councils and businessmen.

Prior to Istanbul Africa Trade Company, Burak Unal worked at Oliver Wyman, New York based management consulting firm, as a Financial Services Consultant. In his career at Oliver Wyman, he had several banking projects in Turkey, Italy and Greece. He also took part in business development activities in the Middle East region, including the United Arab Emirates, Saudi Arabia and Lebanon.

Burak holds a master's degree in finance from London School of Economics, a bachelor's degree in management from Bogazici University. He is a Chevening Scholarship Alumnus.

Academic Thesis: Development of the Textile Industry in Kenya and Its Impact on the Balance of Trade (London School of Economics, MSc Finance)

Import from Turkey

According to current GDP figures, Turkey ranks as the 18th largest economy in the World and 7th in Europe. Economic size of Turkey is larger than the combination of Nigeria and South Africa.

Turkish companies are specialized in construction, machinery, textiles, furniture, chemical industry and metal production.

Key Facts in Focused Industries



Chemicals

Turkey is the 2nd largest producer of plastics in Europe and 7th largest producer globally. In the paint industry Turkey ranks as the 5th largest paint producer in Europe.



Metal Production

Crude steel production in Turkey rose to 37.5 million tons in 2017. Turkey's crude steel exports also increased in volume by 8.4 percent from 2016 and reached 18.3 million tons in 2017.



Construction

In the period between 1972-2018 Turkish contractors have undertaken 9300 projects in 120 countries, with a total value of 360 billion USD.



Textile

Turkey is the 3rd largest clothing supplier in Europe and 6th in the world



Machinery

Total export value of the machinery industry reached USD 13.4 billion in 2016, up from USD 5.2 billion in 2005.

Istanbul: The Business Center of Turkey

Organized Industrial Zones in Istanbul

Istanbul and neighboring cities (Kocaeli, Tekirdag and Sakarya) are the main body of Turkish industry. 38 of 271 organized industrial zones in Turkey are located in these cities..

Headquarter of the largest corporations

Most of the firms in Turkey are headquartered in Istanbul. Also, many international firms manage their Middle East, Central Asia and Eastern Europe operations from Istanbul.



Presence of international companies

Major international firms have Foreign Direct Investment and management office in Istanbul region. Some of these companies are Toyota, Mercedes-Benz, Nestle, McKinsey and Citibank.

International conferences and business forums

Istanbul hosts leading business conferences and business forums in many sector. There are specific conferences for Africa-Turkey relations such as International Turkish-African Congress and Turkey-Africa Economic Forum

Content

Crushers and Screeners



Concrete Batching Plants (Stationary and Mobile)



Industrial Boilers, Burners and Fans



Content

Road Construction and Asphalt Machines



Mobile Crane



Concrete Brick Machine



Content

Asphalt Plant



Maize Mill and Processing Plant



Industrial Compressor



Content

Biogas & Biodiesel Facilities



Food Production and Packaging Machines



Irrigation Sprinklers



About Manufacturer of Crushers and Screeners

In 2004, our company was established by the company executives in Ankara and started to operate on Concrete Plants Automation Systems and Mechanical Manufacturing.

Our company, which is in the field of continuous innovation and research with time, has started to export its products and machines in the foreign markets and has started to expand its customer network by producing new products in line with the incoming demands. With this growth, in the last 5 years, it has reached 50+ machine sales capacity in the foreign market.

Range of Crushers

60m³ – 240m³ capacity



Mobile Concrete Batching Plant

35m³ – 200m³ capacity



Concrete Mixer

Single-shaft and double-shaft mixers.



Price List – Crushers and Screeners – 1

Vibrated Feeder Proper for Heavy Duty
EXW Price: \$59,000



- Dimensions : 1200x5100 mm
- Bunker : 30 m³
- Capacity : 300 to 350 tons / hour
- Grid Length : 1460 mm
- Main Body Sheet : 25 mm.
- Weight : 24.5 tons.
- Engines : 2x9,2 kW at 1000 rev / min will be Emtaş Brand
- Number of springs : 14 ea
- Type of Bypass : Flat grid type (throttle transfer)
- Grill casting : 16-18 mn. 1,5 cr.
- Type of Bunker : With flat ramp climbing
- Anchorage slots : pin click - fit
- Bypass chute : With rear additional saddle

Price List – Crushers and Screeners – 2

Primary Impact Crusher EXW Price: \$108,000



- Rotor : 1430 x 1250
- Engine power : 250 kW - 1500 rpm.
- Rotor Speed : 435 rpm.
- Maximum Feeding : 900 x 900 mm.
- Capacity : 250-300 ton / hour
- Weight : 24,5 tons.
- Bearings : Heavy Duty Spherical Roller Bearing
- (SKF or FAG BRAND)

Price List – Crushers and Screeners – 3

Vibrating Screening

EXW Price:

2 Decks: \$31,000, 3 Decks: \$37,000, 4 Decks: \$41,000



- Rated sizes : 2000 x 5000 mm
- Motor power : 22 kw 1500 d/dk
- Drive system : with conventional drive, with 4 weights
- Amount of Ball Bearing : 2 ea
- Number of Ball Bearing : 22328 (FAG T41 Ball Bearing with Vibration Amplitude)
- Screening area : Single stage
- Number of Vibration amplitude : 6-8 amplitude, Linear Free Eliptic
- Number of Springs : 12 ea
- Front chute : with 6 mm rotary chute
- Bottom chute : flat discharge chute
- Type of power transmission : belt pulley couples
- Body Construction : Heavy duty type (12mm ST37 Ereğli Iron Steel Sheet Metal) Seamless manufacturing bolted frame construction Stone Box front grooves, no wear, valve front groove

Price List – Crushers and Screeners – 4

Primary Jaw Crusher
EXW Price: \$224,000



- Rated sizes : 1300x950 mm
- Outlet clearance : 150-200 mm
- Capacity : 400-450 ton / hour
- Thickness of sheet metal : ST-37 80 mm
- Engines : 160 Kw GAMAK MARC
- Gauge Group : Manual hydraulic
- Ball bearings : Movable bobbin for heavy duty (SKF branded)
- Pitman triggering : with spring protection
- Flywheel cycle : 210 d / min
- Side bearings : GS-45 steel casting
- Picking Pitman : GS-52 steel casting
- Crushing jaws : 16-18 mn. 1,5 cr.
- Pitman protection rods : GG-18 gray cast iron
- Side lining for body protection : 16-18 mn.
- Drive warning system : belt pulley couples
- Weight : 42,5 ton

Price List – Crushers and Screeners – 5

Vertical Shaft Crusher EXW Price: \$49,000



- Max Feeding : 45 mm.
- Rotor Diameter : 900 mm. / CLOSE ROTOR
- Rotor Speed : 50-70 m / sec.
- Drive : 185 kW x 2/1500 rpm.
- Capacity : 70-80 tons / hour 0-5 sand production at 5-15 mm feed.
- Total Capacity : 230 tons / hour
- Weight : 14.500 kg
- Standard Equipments:
 1. Electric motorized Hydraulic Unit (Used for Belt tensioning and Upper Body Lifting)
 2. One-sided maintenance platform (galvanized grating and steps)
 3. Drive pulley for two separate speeds (1400 rpm - 1600 rpm)
 4. Automation control panel (Vibration sensor switch - Breaker feed control-working hours)
 5. Maintenance Crane

Price List – Crushers and Screeners – 6

Mobile Scalping Screen (Belt Feeder)

EXW Price: \$178,000



- Technical details to be shared with interested clients.

About Manufacturer of Concrete Plants

In 2004, our company was established by the company executives in Ankara and started to operate on Concrete Plants Automation Systems and Mechanical Manufacturing.

Our company, which is in the field of continuous innovation and research with time, has started to export its products and machines in the foreign markets and has started to expand its customer network by producing new products in line with the incoming demands. With this growth, in the last 5 years, it has reached 50+ machine sales capacity in the foreign market.

Stationary Concrete Plant 60m³ – 240m³ capacity



Mobile Concrete Batching Plant 35m³ – 200m³ capacity

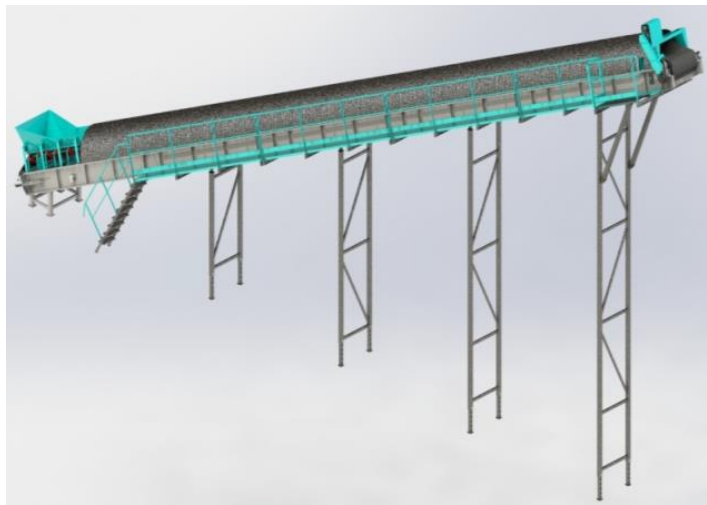


Concrete Mixer Single-shaft and double-shaft mixers.



Price List – Concrete Plants – 1

Stationary Concrete Plants
EXW Price: Starting from \$98,000



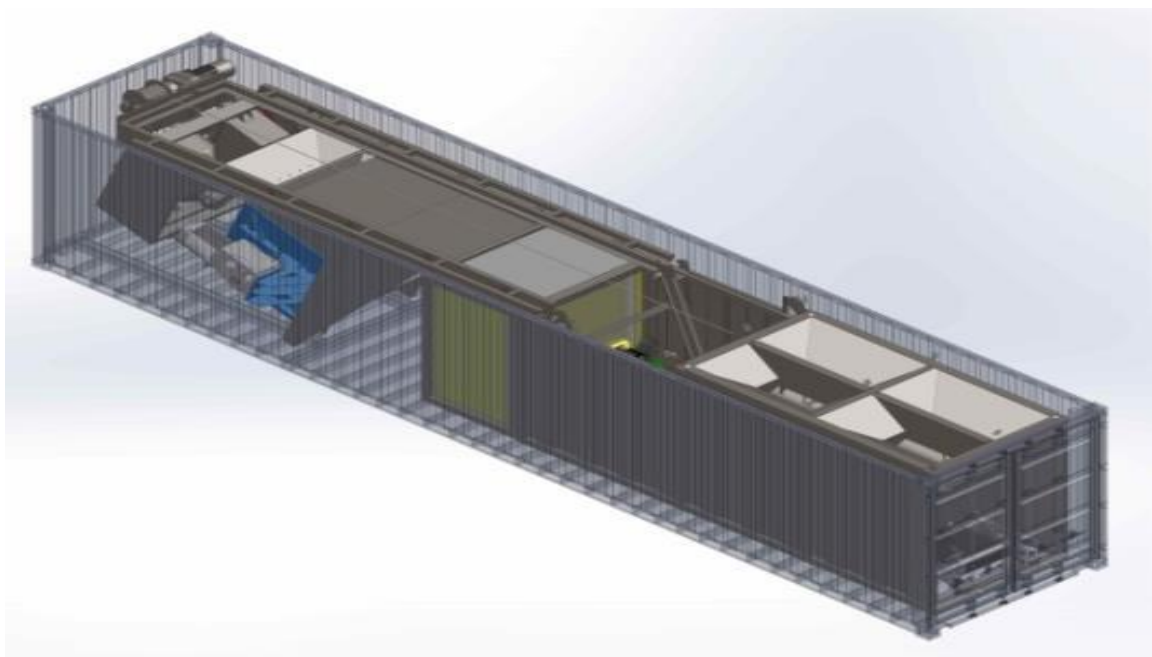
Price List – Concrete Plants – 2

Mobile Concrete Plants
EXW Price: Starting from \$89,000



Price List – Concrete Plants – 3

Compact Concrete Plants (Fit in 40ft Container)
EXW Price: Starting from \$84,000



Price List – Concrete Plants – 4

Bolted Cement Silos
EXW Price: Starting from \$9,500



Price List – Concrete Plants – 6

Prefeeding Unit with Bunker
EXW Price: Starting from \$28,000



Price List – Concrete Plants – 7

Mixer (Single Shaft and Double Shaft)
EXW Price: Price upon request



About Manufacturer of Boilers, Burners and Fans

Founded in 1955, our company specializes in the design, manufacture, sale and installation of special heating and ventilation systems. It is one of the prominent players in the world with its production facility having 24,000 square-meters closed area. In addition to the products it produces through its own research and development activities, it has licensed production and distribution agreements with global companies.

Our company is Turkey's leading company in the production of high capacity boilers, burners and fans. Industrial products are used in power plants, iron and steel industry, concrete production plants and many other industrial activities.

In addition to domestic projects, our company designed and installed boilers for industrial plants abroad.

Boilers

Industrial water tube and fire tube boilers.



Burners

Natural gas and liquid burners.



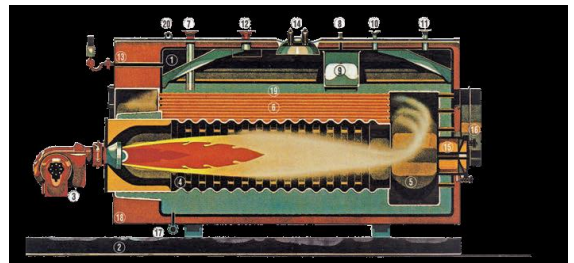
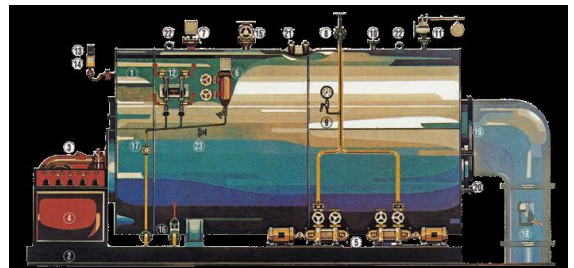
Fans

Centrifugal and axial fans.



Heat Pressure Steam and Hot Water Boilers

EXW Price: Price depends on project design



Design Work

During the design of central heating plants, the valid DIN 4752 and DIN 4755 standards as well as TRD 403 and VDI 2050 norms should be complied with.

Burner Selection

The burner capacity should be accurately matched with the boiler capacity, boiler flue gas side pressure drop and primary fan airy capacity.

Production

High pressure steam and hot water boilers are manufactured according to the German TRD and DIN norms and also Turkish TS and International standards, in parallel to our technical cooperation with German companies which lasts for a long time. The production processes are conducted by our experienced staff with careful quality control and necessary x-ray examinations at each phase of manufacturing. Fire tube boilers are subjected to the normalization procedures in a special annealing oven when necessary. In order to choose the most suitable boiler, our Boiler Production Programme is extended up to the steam capacities of 30t/h for fire tube and 150 t/h for water tube boilers at different types.

Industrial Burners

EXW Price: Price depends on project design



Features:

- High Efficiency
- Long Life
- Safe Operation
- High Quality
- 0,29 MW - 29 MW Capacity Range
- Full Compatibility With the Load
- High Turndown Ratio
- Electronic Control
- Fully Modulating
- Environment Friendly

Capacity Diagram:

Tip / Type (BGE / BGECE / EG)	Brülör Kapasitesi / Burner Capacity		1 kW = 860 kcal 1 Gcal = 1.000.000 kcal
	Gcal / h	(kW / h)	
150	0.25 - 1.50	(290-1744)	
250	0.4 - 2.50	(465-2907)	
350	0.55 - 3.50	(639-4070)	
500	0.80 - 5.0	(930-5814)	
600	1.0 - 6.0	(1162-6977)	
700	1.15 - 7.0	(1337-8140)	
800	1.30 - 8.0	(1511-9302)	
1000	1.60 - 10,0	(1860-11628)	
1250	1,60 - 12,50	(1860-14535)	
1500	1.90 - 16.0	(2209-18605)	
2000	2.50 - 20,0	(2906-23256)	
2500	3.10 - 25.0	(3604-29070)	

Industrial Fans

EXW Price: Price depends on project design



Type of Fans:

- Radial Fans
- Axial Fans
- Fan Auxiliary Equipment & Accessories

We supply Industrial Fans for industries such as Cement, Glass, Iron and Steel, Paint, Chemical, Wood, Pharmaceutical, Paper, Tobacco and Textile according to international standards.

Our Industrial Fan production range consists of 6 main series and 20 different fan impeller types which covers a wide range of capacity area for each series.

Fan impellers that are suitable for dusty conditions can also be produced for capacity area of each series. In addition to our standard fan manufacturing program, various fan types and special fans are also being produced for transporting longfiber materials. Our expert engineers select the most suitable fan according to the process and environmental conditions.

About Manufacturer of Asphalt Plants and Road Construction Machines

Our partner company is one of the leading companies in Turkey and has 4 factories with total production area of 29,000 square-meters. The company page will be updated when the trade partnership deal is finalized.

Bitumen Asphalt Emulsion Plant

Asphalt production plants
(various sizes).



Asphalt Distributor

Asphalt distribution machinery
mounted on trucks.



Asphalt Sprayer

Asphalt sprayer for maintenance
purposes.



Asphalt Emulsion Plant

EXW Price: Price upon request



Bitumen emulsion is widely used in road construction and maintenance:

1. New road construction: prime coat, adhesive coat and seal coat;
2. road maintenance: fog seal, slurry seal, micro surfacing treatment, chip seal, ultra thin wearing layer, pothole rehabilitation and etc.;
3. Road pavement recycling: cold in-place recycling asphalt.

Asphalt Distributor

EXW Price: Price upon request



The bitumen sprayer unit has a built in heating system with a high capacity burner to heat the bitumen. Our truck and trailer mounted asphalt distributors are built for efficient and accurate heating, hauling, storage and spray application of Asphalt Cement, AC, and asphalt emulsion spraying. Ideal for applying bitumen and emulsions to roadways, parking lots and base stabilization projects of all sizes. Their highly efficient design makes for affordable operation, while providing precision spraying of bitumen, emulsion and tack coating materials.

Maintenance Asphalt Sprayer

EXW Price: Price upon request



The operating principle of asphalt distributor is to pump the hot asphalt from asphalt storage pool into asphalt tank through asphalt pump; Transport it to construction site and heats the asphalt up to working temperature by heating system; Open asphalt pump and spraying valve by operating electrical apparatus control system; According to three overlapping spraying effect to spray the hot asphalt on pavement on the basis of measured distributing amount and pressure. The residual asphalt in pipeline will be transported into asphalt tank after finishing the work.

Small light-weight handy portable sprayers play a very active part in confined areas asphalt emulsion patch coating. You can choose the best matching sprayers from skid type to cart type and gear pump type air pressured one etc. according to the working site conditions.

About Manufacturer of Mobile Cranes

Istanbul Africa Trade Company works with three major mobile crane manufacturer in Turkey. We receive the price and delivery terms of these three companies and deliver to our clients.

We provide both telescopic and knuckle boom cranes. The capacity of cranes range from 30 Tons to 220 Tons. The vertical reach of the cranes are up to 60 metres. All the cranes are truck mounted and our technicians work at the client site in Africa in installation process.

Knuckle Boom Crane

Up to 220 Tons Lifting Capacity



Telescopic Crane

Up to 130 Tons Lifting Capacity



Telescopic Crane

EXW Price: Starting from \$130,000 (depends on lifting capacity)



Cranes like the telescopic cranes are often used in day-to-day hauling operations but it has also to be noted that these heavy cranes are very important when it comes to carrying out manoeuvring operations in shipping ports.

Telescopic cranes are mobile in the sense that they transport goods and items in a flexible manner. Also since telescopic cranes are further equipped with height adjustments, when it comes to hauling and transferring the goods from one place to another, the problems related to height are completely eradicated.

Knuckle Boom Crane

EXW Price: Starting from \$170,000 (depends on lifting capacity)



Knuckleboom cranes have become very common on offshore vessels as less of the deck space is blocked by the crane. Disadvantages of this crane type are the higher power demand and increased maintenance requirement due to the increased number of moving parts.

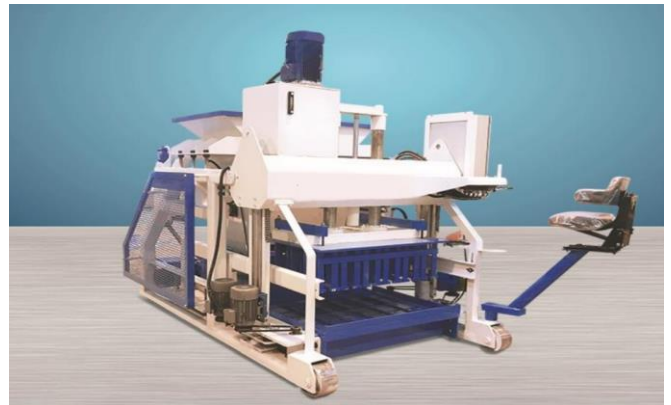
Knuckleboom crane arms are much lighter than boom truck cranes, and they are designed to allow for more payloads to be carried on the back of the truck that it is mounted on. The majority of them are mounted behind the cab and leave the entire bed of the truck empty.

About Manufacturer of Concrete Brick Machinery

Istanbul Africa Trade Company partners with the leading concrete brick machinery manufacturer in Turkey. We provide on-site installation and training for your employees in Africa.

We provide brick building machinery and its equipment. We use our own CNC machines for brick moulds. The capacity of our machines ranges from 500 blocks to 10,000 blocks per hour.

Concrete Brick Machine
Up to 10,000 blocks per hour



High Quality Mould
All of our moulds are prepared
by high technology CNC
machines



Concrete Brick Machine

EXW Price: Starting from \$62,000 (depends on production capacity, automated features and number of moulds)



- The machine can produce interlock paver, road bordure, brick (4", 6" and 8").
- The production is made on wooden pallets .
- All motions on the machine provided by a hydraulic system.
- Machine Production Capacity:
 - Concrete Block Mould 4": 11,200-13,500 in 8 hours
 - Concrete Block Mould 6": 8,000-9,600 in 8 hours
 - Concrete Block Mould 8": 6,400-7,700 bricks in 8 hours
- For the installation, our company is responsible for the salary and flight ticket of 1 engineer/technician. The buyer is expected cover the accommodation and living expenses.

About Manufacturer of Asphalt Plants

Istanbul Africa Trade Company has strong connections in the Road Construction Sector. We provide turnkey solutions for asphalt plants.

We install asphalt plant at various sizes and in different technologies. Our asphalt plant capacity ranges between 50 to 450 Tons per hour. We offer continuous type, batch type and mobile asphalt plants for our clients.

Continuous Type Asphalt Plant

This type of asphalt plants fulfill your basic business needs at affordable price level.



Batch Type Asphalt Plant

Modern and high quality facility for premium asphalt and road construction.



Mobile Asphalt Plant

Mobile solution for contractors.



Batch Type Asphalt Plant Offer

100T/H Batch Type Stationary Asphalt Plant - \$565,000



- 1 FEED BUNKER 18 m3 x 4
- 2 DOZING BELT 2,2 kW Motor-Gear - 600 mm RUBBER TAPE x 4
- 3 COLLECTING BELT 4 kW Motor-Gear - 600 mm RUBBER TAPE x 1
- 4 DRYER SLOPED BELT 5,5 kW Motor-Gear - 600 mm RUBBER TAPE x 1
- 5 ROTATING DRYER 1.800 X 7.500 and BURNER x 1
- 6 FILTER (JET-PULSE TYPE) 25.000 M3/H x 1
- 7 FILLER SILO 20 TONS x 1
- 8 FILLER ELEVATOR x 1
- 9 AGGREGATE ELEVATOR x 1
- 10 VIBRATING SCREEN -TWO VIBRATORS- 4 LAYER SCREEN x 1
- 11 HOT AGGREGATE SILO 20 m3 x 1
- 12 AGGREGATE WEIGHING SCALE 1.000 kg 4 LOAD-CELL x 1
- 13 FILLER WEIGHING SCALE 350 kg 3 LOAD-CELL x 1
- 14 BITUMEN WEIGHING SCALE 120 kg 3 LOAD-CELL x 1
- 15 FILLER WEIGHING SCREW x 1
- 16 MIXER 15 kW DUOBLE REDUCE RGEARBOXES 1.000 kg x 1
- 17 HOT ASPHALT STOCK SILOS 20 TONS x 1
- 18 COMPRESSOR 18,5 kW 3.2 m3/min. 8 BAR x 1
- 19 CONTROL CABINET 2.350 X 5.000 X 2.400 mm x 1
- 20 BITUMEN TANK (50 TONS) x 1
- 21 HOT OIL GENERATOR 1,000.000 kcal/h. x 1

Mobile Continuous Type Asphalt Plant Offer

80T/H Mobile Continuous Type Asphalt Plant - \$545,000



- 1** COLD AGGREGATE FEEDING SILOS 10 m³ x 4
- 2** COLLECTING CONVEYOR 5.5 kW Motor-Gear - 650 mm RUBBER TAPE x 1
- 3** DRYER FEEDING CONVEYOR 4 kW Motor-Gear - 650 mm RUBBER TAPE x 1
- 4** DRYER 1.500 X 6.500 x 1
- 5** DRYER DIESEL BURNER 5M KCAL/H x 1
- 6** HOT AGGREGATE ELEVATOR 90T/H x 1
- 8** FILLER SYSTEM AND ELEVATOR x 1
- 9** SCREEN UNIT 90T/H CAPACITY 4 AGGREGATE FRACTIONS x 1
- 10** HOT AGGREGATE SILO 15T x 1
- 11** AGGREGATE WEIGHING SCALE 1.100 kg x 1
- 12** BITUMEN WEIGHING UNIT 150 kg x 1
- 13** FILLER WEIGHING UNIT 200 kg x 1
- 14** MIXER 2x15 kW 1.000 kg x 1
- 15** BITUMEN TANK (40 TONS) x 1
- 16** HOT OIL BOILER 500.000 kcal/h. x 1

Decanting Bitumen Heating Plant

10T/H Decanting Bitumen Heating Plant - \$35,000



About Manufacturer of Maize Mill and Processing Facility

Istanbul Africa Trade Company has partnership with one of the largest manufacturer of maize mills in Turkey. We work in collaboration with them to offer you the best solution.

African countries produce crops such as maize and wheat. Our facilities process maize from the beginning until packaging.

We install maize mill plants at various sizes and in different technologies according to the demand of our clients..



Maize Mill and Processing Plant

10T/H Capacity Moden Maize Processing Facility - \$1,645,000



Description	Price
Cleaning Section	\$182,500
Degermination Section	\$142,500
Milling Section	\$857,500
Product Packing Section	\$288,000
Byproduct Packing Section	\$92,500
Electrical Works	\$197,500
Supervision of Assembly	\$67,500
TOTAL	\$1,828,000
DISTRIBUTOR DISCOUNT (10%)	\$182,800
NET TOTAL	\$1,645,200

About Manufacturer of Industrial Compressor

Industrial compressors are used in many areas, such as bottling plants, mines and pneumatic machinery. The three most common air compressor types are the reciprocating, rotary screw and centrifugal.

The factories and mines in Turkey rely on dependable compressors that are manufactured in Turkey. Turkish compressors are exported to more than 80 countries worldwide. Our compressors are reliable, high-quality and energy efficient.

We provide our clients with air compressors according to their manufacturing needs.



200KW 7.5 Bar Screw Compressor

200KW 7.5 Bar Screw Compressor - \$68,000



Data	YVK 270 D
Capacity - Free Air Delivery	36.9 m ³ /min
Max. Working Pressure	7,5 bar
Min. Working Pressure	6 bar
Motor Power	200 kW / 270 HP / 380 V - 50 Hz / 440 V - 60 Hz
Motor Origin	Turkey
Motor Protection Class	IP 55
Motor Efficiency Class	IE 3
Isolation Class	F
Drive Type	Direct Drive
Control Panel /	PLC / YIGITSAN
Electrical Components	Himmel produced by Schneider
Suction Group Origin / Brand	Italy
Oil / Air Cooler Origin	Turkey
Min. Pressure Valve Origin	Italy
Thermostatic Valve / Origin	Available / Turkey
Separator Type / Turkey	Integrated into Oil Tank / Turkey
Hydraulic Hose / Origin	Turkey / resistant up to 135 °C
Oil Capacity	150 Lt
Volume of Oil in Pressured Air	3 mg/m ³
Ambient temperature min-max.	0 - 45°C
Noise level from 1 m.	83 dB(A)
Lubrication	Oil injected
Dimensions (WxLxH)	3000x1800x2000 mm
Weight	3600kgs
Oil Filter Origin	Turkey
Air Filter Origin	Turkey
Dust Filter Origin	Turkey
Oil Tank Origin / Brand	Turkey / Produced and designed by YIGITSAN
Canopy Origin / Brand	Turkey / Produced and designed by YIGITSAN
<p>*Assembly process of parts and production of compressors are made in YIGITSAN factory.</p> <p>*Please get a quote for this customized product.</p>	

315KW 7.5 Bar Screw Compressor

315KW 7.5 Bar Screw Compressor - \$132,000



DESCRIPTIONS	FEATURES
Rpm Of Fan Motor (min.) [rpm]	
Cooling Air Hood Outlet Size (mm)	2*(1010*1250)
Total Oil Capacity [lt]	120
Oil Flow Rate To Airend(lt / Min.)	350
Oil Content In Air [mg / M3]	3
Separator Type (spin-on / Cyclone)	Cyclone
Connection Outlet Piping Size (inch)	2*DN 80
Dimensions (length X Width X Height) (mm)	4500*2400*2250
Net Weight [kilogram]	8700
Sound Pressure Level At 100% Load [db (a)] (**)	81
Manufacturer Oil Filter	MANN-HUMMEL
Manufacturer Separator	MIKROPOR
Manufacturer Coupling	REXNORD
Manufacturer Combi Cooler	AKG
Standard Of Used Oil	ISO VG68
Main Motor	OMEGA
Hydraulic Hoses	VITILLO - GATES / USA

*FAD / Free air delivery performance measured according to ISO 1217, Annex C :2009

** Noise Level measured to ISO 2151, Tolerance ± 3 dB (A) Total package power includes all losses (fans, converters etc.)

***Lupamat reserves the right to make alterations on given data without prior notice

About Manufacturer of Biogas & Biodiesel Facilities

Istanbul Africa Trade Company works with the major biodiesel and biogas machinery manufacturer in Turkey. We provide installation and training for your employees in Africa.

We manufacture integrated systems. The biomass is extracted, neutralized and burnt to produce electricity. We customize our machine set according to your business needs. We provide turnkey solutions.

Waste Oil Management Facility

Thermal Cracking method to produce oil



Biodiesel Plant

Integrated system for storage, neutralization and electricity generation



Biodiesel Plant

**EXW Price: Starting from \$245,000 (NEUTRALIZED FOOD OIL
BIODIESEL PLANT AND 1450 KW/H GENERATORS)**



- Integrated Biodiesel and Electricity Generation Facility.
- This set consists of 22 machines, tanks and equipment.
- We provide training and know-how transfer.
- For the installation, our company is responsible for the salary and flight ticket of 2 engineers/technicians. The buyer is expected cover the accommodation and living expenses.

About Manufacturer of Food Processing and Packaging Machines

Istanbul Africa Trade Company works with the food processing and packaging machinery manufacturers in Turkey. We provide installation, training for your employees and machine service in Africa.

We provide food boiling, canning and packaging machines for local food types. Our product range includes semi-full automatic canning machines, boiling machines and tropical fruit packaging machines.

Industrial Cooks

Industrial cooking machines for all type of food.



Industrial Food-Grade Belt System

Increases efficiency in food production.



Canning System

Canning system for all type of products (pineapple, beans, tomatoes, etc.)



Food Processing and Canning Machines

EXW Price: Price upon request depending on system design



- Semi and Full Automatic Food Processing Systems
- Fully-Integrated
- Adjustable to all fruit and vegetable types
- Includes packaging or canning
- Manufactured in EU Standards

About Manufacturer of Irrigation Sprinklers

Our company was established in 1968 in Western part of Turkey. We distribute our products to 200 points in Turkey and exports them to about 54 countries.

Range of our irrigation guns is consisted of 19 models with body angles between 18 – 43 degrees in different sizes and properties. As to the traveling irrigators, our company provides service to our customers with 13 versions.

We manufacture our products in our modern facility in Kirklareli - Turkey according to international standards and regulations. All products are manufactured in fully automated CNC machines and tested with water.

Impact Type Sprinkler

The range of sprinkler varies from 9 metres to 45 metres. These sprinklers work with water impact.



Industrial Sprinkler

Gear type sprinkler for industrial irrigation use. Range of shooting up to 65 metres.



Irriforce Irrigation

Wide range of traveller rainguns for agricultural or specific use.






Price List – Impact Type Sprinkler - 1

40% Discount on Below List Price
EXW Istanbul Price

Product Code	 Istanbul Africa Trade Company	www.istanbulafrika.com	List Price USD	List Price EURO	Euro Pallet Capacity (100x120x175H)
YZK070 - BSP	Yuzuak B30 Brass and Stainless Steel Spindle and Part or Full Circle Standart Nozzles : 8mm - 10mm-12mm-14mm Plastic Main Body Inlet Size : 1,5" Female		56 USD	51 EUR	252 PCS
YZK071 - NPT					
YZK072 - BSP	Yuzuak ATOM28 Brass and Stainless Steel Spindle and Part Circle Full Metal Body Standart Nozzles : 10mm - 12mm - 14mm Inlet Size : 1,5" Female		58 USD	53 EUR	252 PCS
YZK073 - NPT					
YZK074 - BSP	Yuzuak ATOM35 Brass and Stainless Steel Spindle and Part Circle Standart Aluminium Nozzles : 12mm - 14mm - 16mm - 18mm Inlet Size : 1,5" Female		86 USD	78 EUR	90 PCS
YZK075 - NPT					
YZK076 - BSP	Yuzuak ATOM40 Brass Spindle and Part Circle Standart Aluminium Nozzles : 14mm - 16mm - 18mm Inlet Size : 2" Female		170 USD	155 EUR	90 PCS
YZK077 - NPT					
YZK078 - BSP	Yuzuak ATOM42 FC High Performance Full Circle Impact Sprinkler Standart Nozzles : 14mm - 16mm - 18mm - 20mm - 22mm Inlet Size : 2" Female		170 USD	155 EUR	65 PCS
YZK079 - NPT					








Price List – Industrial Sprinkler - 2

40% Discount on Below List Price
EXW Istanbul Price

Product Code	 www.istanbulafrika.com	List Price USD	List Price EURO	Euro Pallet Capacity (100x120x175H)	
YZK001 - BSP	Yuzuak JET30S Nozzles : 10mm -12mm - 14mm -16mm -18mm Body Angle 28° Inlet Size 1,5" Female		250 USD	225 EUR	72 PCS
YZK002 - NPT					
YZK003 - BSP	Yuzuak JET35 Standart Nozzles : 10mm -12mm-14mm-16mm-18mm Body Angle 24° Inlet Size 1,5" Female		250 USD	225 EUR	72 PCS
YZK004 - NPT					
YZK005 - BSP	Yuzuak JET40 Standart Nozzles : 10mm - 12mm - 14mm - 16mm 18mm - 20mm-22mm Body Angle 25° Inlet Size 2" Female		340 USD	305 EUR	66 PCS
YZK006 - NPT					
YZK007 - BSP	Yuzuak JET50 Standart Nozzles : 14mm-16mm-18mm-20mm-22mm- 24mm Body Angle 25° Inlet Size 2" Female		430 USD	390 EUR	60 PCS
YZK008 - NPT					
YZK009 - BSP	Yuzuak JET55 Standart Nozzles : 20mm- 22mm- 24mm- 26mm- 28mm Body Angle 25° Inlet Size 2,5 " Female With Quick Coupling		560 USD	510 EUR	40 PCS
YZK010 - NPT					
YZK011	Yuzuak JET65 Standart Nozzles : 24mm- 26mm - 28mm - 30mm -32mm Body Angle 24° Inlet Size : 78mm x 130 mm Flange Connection		680 USD	620 EUR	21 PCS
YZK012	Yuzuak JET70 Adjustable Speed Control Nozzle Standart Nozzles : 28mm - 30mm - 32mm - 34mm Body Angle 23° Inlet Size : 78 X 145 Flange Connection		900 USD	820 EUR	12 PCS L: 135cm W: 100cm H: 115cm






Price List – Industrial Sprinkler - 3

40% Discount on Below List Price
EXW Istanbul Price

Product Code	 Istanbul Africa Trade Company	www.istanbulafrika.com	List Price USD	List Price EURO	Euro Pallet Capacity (100x120x175H)
YZK023 - BSP	Yuzuak DUSTJET Dust Control Raingun For Mining Nozzles : 14mm - 16mm - 18mm - 20mm - 22mm - 24mm Body Angle 43° Inlet Size 2" Female		480 USD	435 EUR	60 PCS
YZK024 - NPT					
YZK025	Yuzuak Super DUSTJET Dust Control Raingun For Mining Nozzles : 22mm - 24mm - 26mm - 28mm - 30mm - 32mm Body Angle 43° Inlet Size : 78mm x 130 mm Flange Connection		680 USD	620 EUR	21 PCS
YZK026	Yuzuak Fire JET Short Barrel High Volume Raingun Standart Nozzles : 30mm-32mm-34mm-36mm Inlet Size : Flange Connection (145mm x 78mm) Working Pressure : 4 kg/cm² - 11 kg/cm²		1.000 USD	900 EUR	21 PCS
YZK027 - BSP	Yuzuak RED ATOM28 Brass and Stainless Steel Spindle and Part Circle Full Metal Body Standart Nozzles : 10mm - 12mm - 14mm Inlet Size : 1.5" Female		70 USD	64 EUR	252 PCS
YZK028 - NPT					
YZK029 - BSP	Yuzuak RED ATOM40 Brass and Stainless Steel Spindle and Part Circle Standart Aluminum Nozzles : 14mm - 16mm - 18mm Inlet Size : 2" Female		180 USD	164 EUR	90 PCS
YZK030 - NPT					
YZK031 - BSP	Yuzuak Dustjet 27° Standart Nozzles : 14mm-16mm-18mm -20mm -22mm -24mm Body Angle 27° Inlet Size 2" Female		480 USD	436 EUR	60 PCS
YZK032 - NPT	Yuzuak Dustjet 27° Standart Nozzles : 14mm-16mm-18mm -20mm -22mm -24mm Angle 27° Inlet Size 2" Female				

Price List – Irriforce Irrigation

40% Discount on Below List Price
EXW Istanbul Price

Model Name	Product Photo	Technical Details	List Price USD	List Price EURO
Irriforce Minix TD-120		<p>Effective irrigation Length : 120 Meter Hose Length And Inside Diameter : 60 meter - 32mm Effective Spray Width : 28 Meter - 35 Meter Cable Length, diameter : 120 Meter - 3 mm Raingun Type : Atom22 , Flow Rate : 3,5 m3/h - 7 m3/h Recommended Working pressure : 3 bar-7 bar Recommended Hose inside Diameter : 32mm Travel Speed : 19meter/hour - 100meter/hour 20' Container Loading Capacity : 54 Weight (kg) : 50 kg Box Dimension : 92cm x 60cm x 55cm " These model Come without hose "</p>	1.750 USD	1.590 EUR
Irriforce Minix TD1250-120		<p>Effective irrigation Length : 120 Meter Hose Length and Type : 60 meter - Drag Hose Hose Inside Diameter : 32mm Effective Spray Width : 28 Meter - 35 Meter Cable Length, diameter : 120 Meter - 3 mm Raingun Type : Atom22 Flow Rate : 3,5 m3/h - 7 m3/h Recommended Working pressure : 3 bar-7 bar Travel Speed : 19meter/hour - 100meter/hour Travel Speed Can be Adjustable by Nozzle&Pressure Manuel Hose Reel System 20' Container Loading Capacity : 54 Weight (kg) : 60 kg + 43 kg (Hose&hosereel) Box Dimension : 92cm x 60cm x 55cm</p>	2.500 USD	2.280 EUR
Irriforce Mini TD1500-140		<p>Effective irrigation Length : 140 Meter Hose Length And Inside Diameter : 70 meter - 42mm Effective Spray Width : 32 Meter - 46 Meter Cable Length, diameter : 140 Meter - 4 mm Raingun Type : Standart Atom28 - Atom35 Optionally Flow Rate : 7m3/h - 19 m3/h Recommended Working pressure : 3,5 bar-8 bar Travel Speed : 7 meter/hour - 70meter/hour Travel Speed Can be Adjustable by Manuel Valve Manuel Hose Reel System 20' Container Loading Capacity : 16 Weight (kg) : 160 kg (With Hose and Hosereel) Box Dimension : 155cm x 85cm x 105cm</p>	4.100 USD	3.730 EUR
Irriforce Midi Sport TD2500-200		<p>Effective irrigation Length : 200 Meter Hose Length And Inside Diameter :100 meter - 65mm Effective Spray Width : 50 Meter - 75 Meter Cable Length, diameter : 200 Meter - 4 mm Raingun Type : JET50 Flow Rate : 18 m3/h - 45 m3/h Recommended Working pressure : 3,5 bar- 8 bar Travel Speed : 8meter/hour - 100 meter/hour Travel Speed Can be Adjustable by Mauel Valve Manuel Hose Reel System 20' Container Loading Capacity : 7 Box Dimension 1 : 154cm x 85 cm x 105cm (210 kg) Box Dimension 2 : 128cm X 95cm X 95cm (140kg)</p>	7.000 USD	6.350 EUR
Irriforce Midi TD2000-200		<p>Effective irrigation Length : 200 Meter Hose Length And Inside Diameter : 100 meter - 51mm Effective Spray Width : 40 Meter - 65 Meter Cable Length, diameter : 200 Meter - 4 mm Raingun Type : JET40 Flow Rate : 12m3/h - 30 m3/h Recommended Working pressure : 3 bar-7.5 bar Travel Speed : 7meter/hour - 60 meter/hour Travel Speed Can be Adjustable by Mauel Valve Manuel Hose Reel System 20' Container Loading Capacity : 7 Box Dimension 1 : 154cm x 85 cm x 105cm (210 kg) Box Dimension 2 : 128cm X 95cm X 95cm (140kg)</p>	6.200 USD	5.650 EUR



In the right place at the right time.
Your international trade operations are in safe hands.



Contact Us



www.istanbulafrica.com



[linkedin.com/company/istanbulafrica](https://www.linkedin.com/company/istanbulafrica)



[facebook.com/istanbulafrica](https://www.facebook.com/istanbulafrica)



[instagram.com/istanbulafrica](https://www.instagram.com/istanbulafrica)



[twitter.com/istanbulafrica](https://www.twitter.com/istanbulafrica)



+90 539 415 3139



Ucaksavar Sitesi Goksin Apt No 11 Etiler Istanbul,
34342, Turkey